

# Species in Peril Along the Rio Grande

## Contemporary Artists Respond

September 28 – December 28, 2019



Education and Outreach

516 ARTS aims to offer educational opportunities for different learning communities in Albuquerque.

### **Gallery visits and activities:**

Experiencing first hand the artworks offers tools for active and diverse learning. We accommodate groups of any age and size. Additional gallery activities can be arranged according to the needs and interests of the students.

### **Classroom activities and artists engagements:**

For each exhibition we design classroom activities and, whereas possible, opportunities for engagements with artists in or outside the gallery.

### **Online resources:**

Curators statements, How to read a label?, Looking at art?, etc..

### **Survey:**

Please let us know what you and your community need from us!

*Species in Peril Along the Rio Grande* exhibition focuses on difficult topics to be discussed, yet very important for students to be exposed to and to engage with.

In particular, among the current ecological crisis, the exhibition narrates stories on biological annihilation, the loss of biodiversity in the form of extinction of animal and plant species. Such process is happening at such scale to be renamed the Sixth Mass Extinction.

The research based nature of the exhibition offers a variety of STEAM opportunities.

**List of topics:**

Habitat conservation

Extinction

Rio Grande

Contemporary art could offer ways for exposure and understanding of very complex matters.

- **Storytelling:** Which stories can the students relate to from their experiences?
- **Embodiment:** What reaction and knowledge can be originated in the physical reaction to art works?
- **Emotional/Rational/Imaginative:** What different learning paths can be activated?



Michael Berman

*Binary Codex - The Habitat*

2019

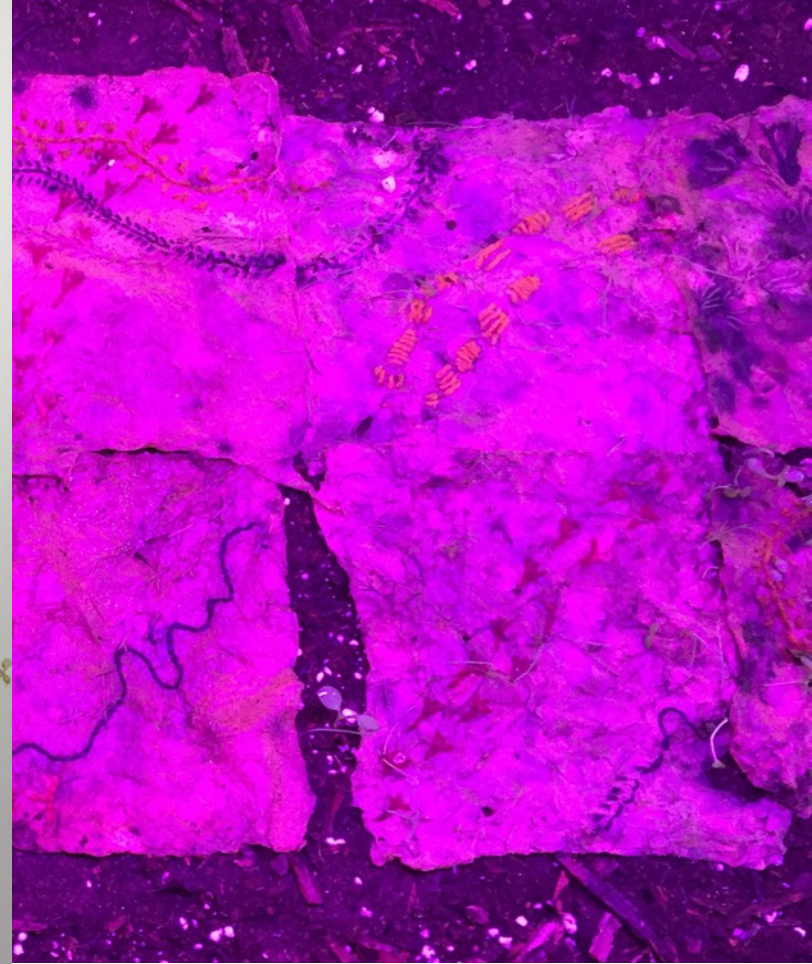
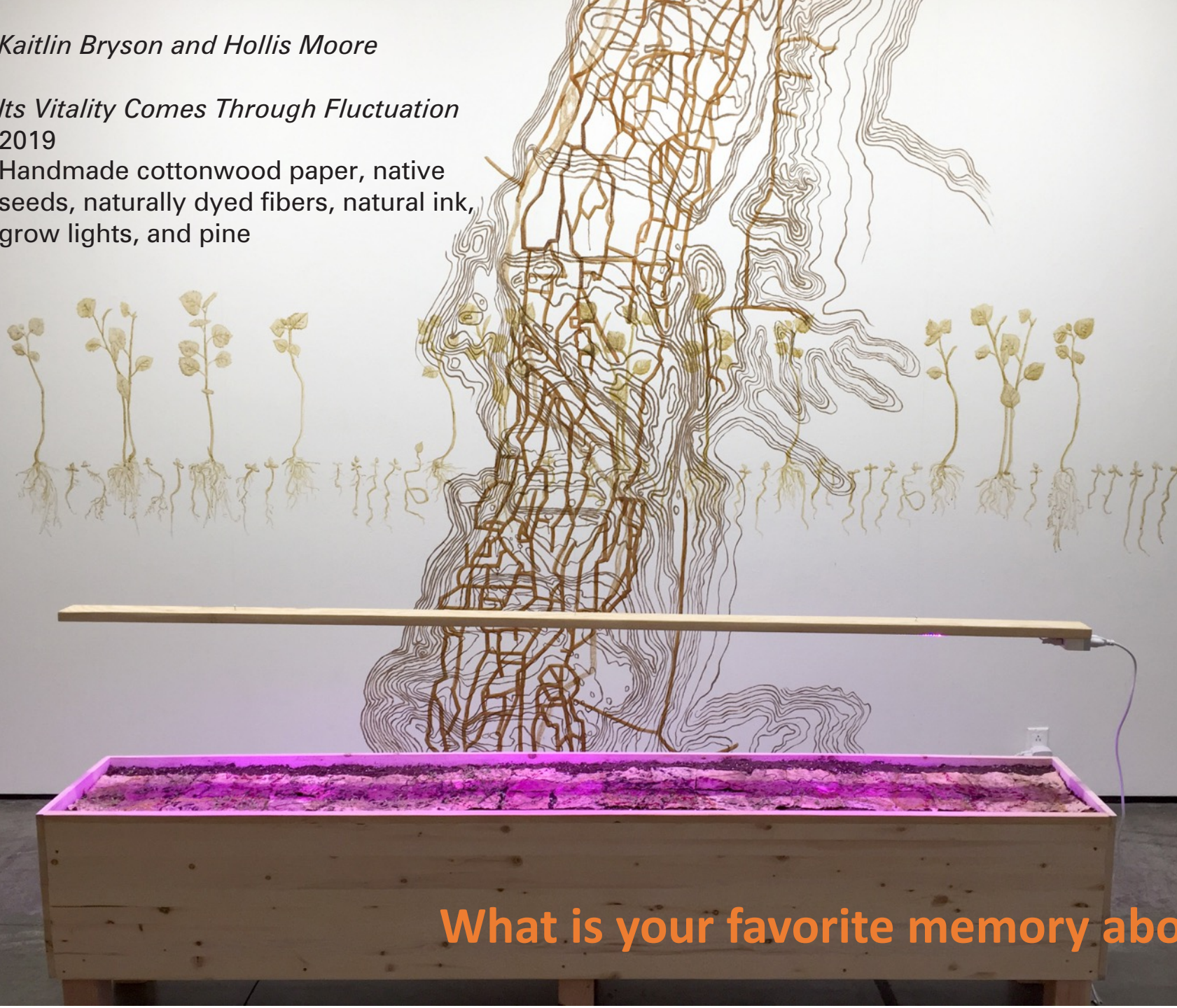
Carbon Pigment on Kozo Washi

**What is natural and what is human made in this picture?**

*Kaitlin Bryson and Hollis Moore*

*Its Vitality Comes Through Fluctuation*  
2019

Handmade cottonwood paper, native  
seeds, naturally dyed fibers, natural ink,  
grow lights, and pine



**What is your favorite memory about the Bosque or the Rio?**

Can you imagine to live without moving?  
How would that be?

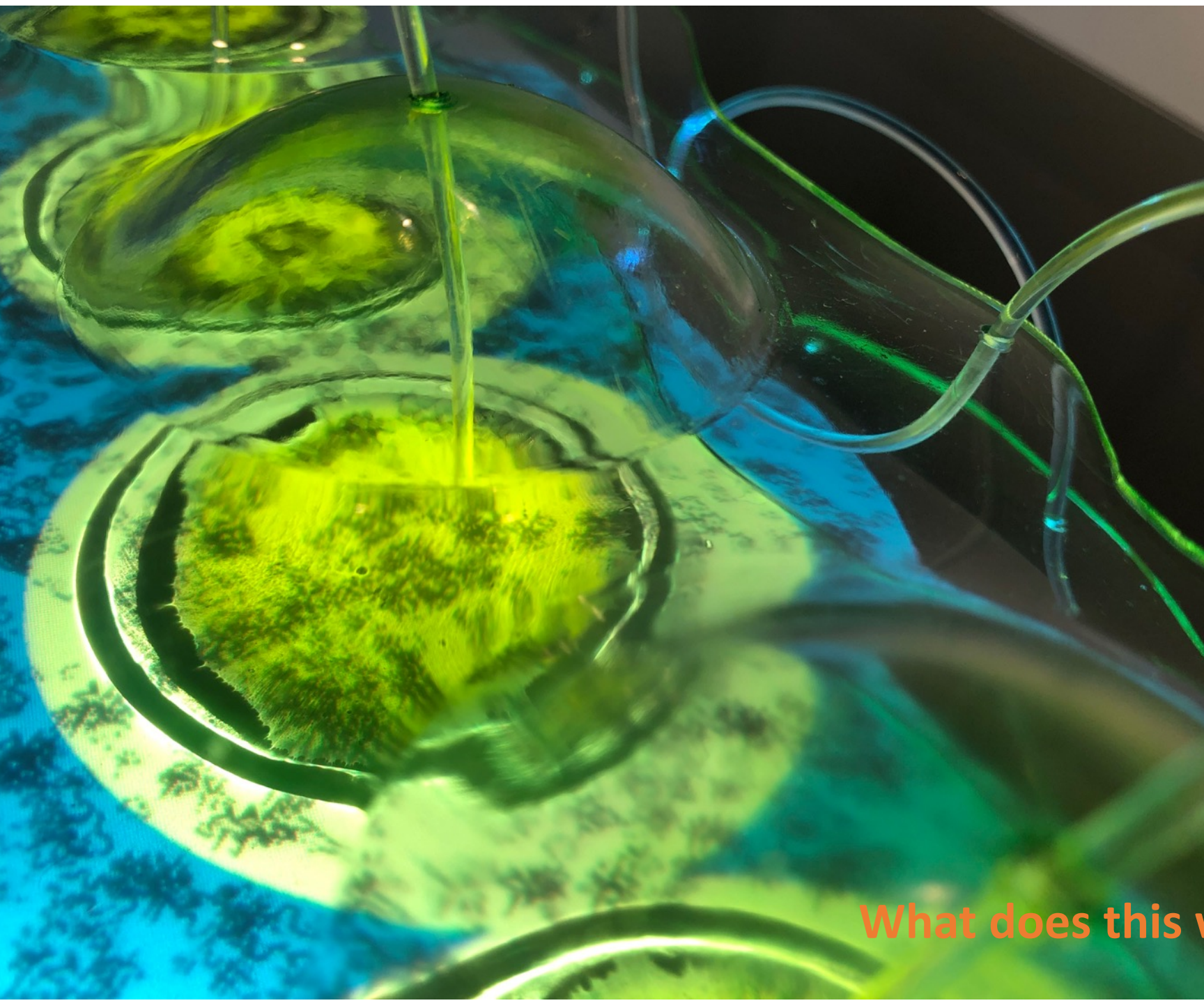


laura carlson

*Lotic Possibilities I-V*  
(*Popenaias popeii*, *Fusconaia mitchelli*, *Truncilla cognata*, *Quadrula couchiana*, *Potamilus metnecktayi*)  
2019  
Glass

*Popenaias popeii - Stratigraphy: looking forward to see back*  
2019  
Concrete, travertine, water from the Black River





Agnes Chavez

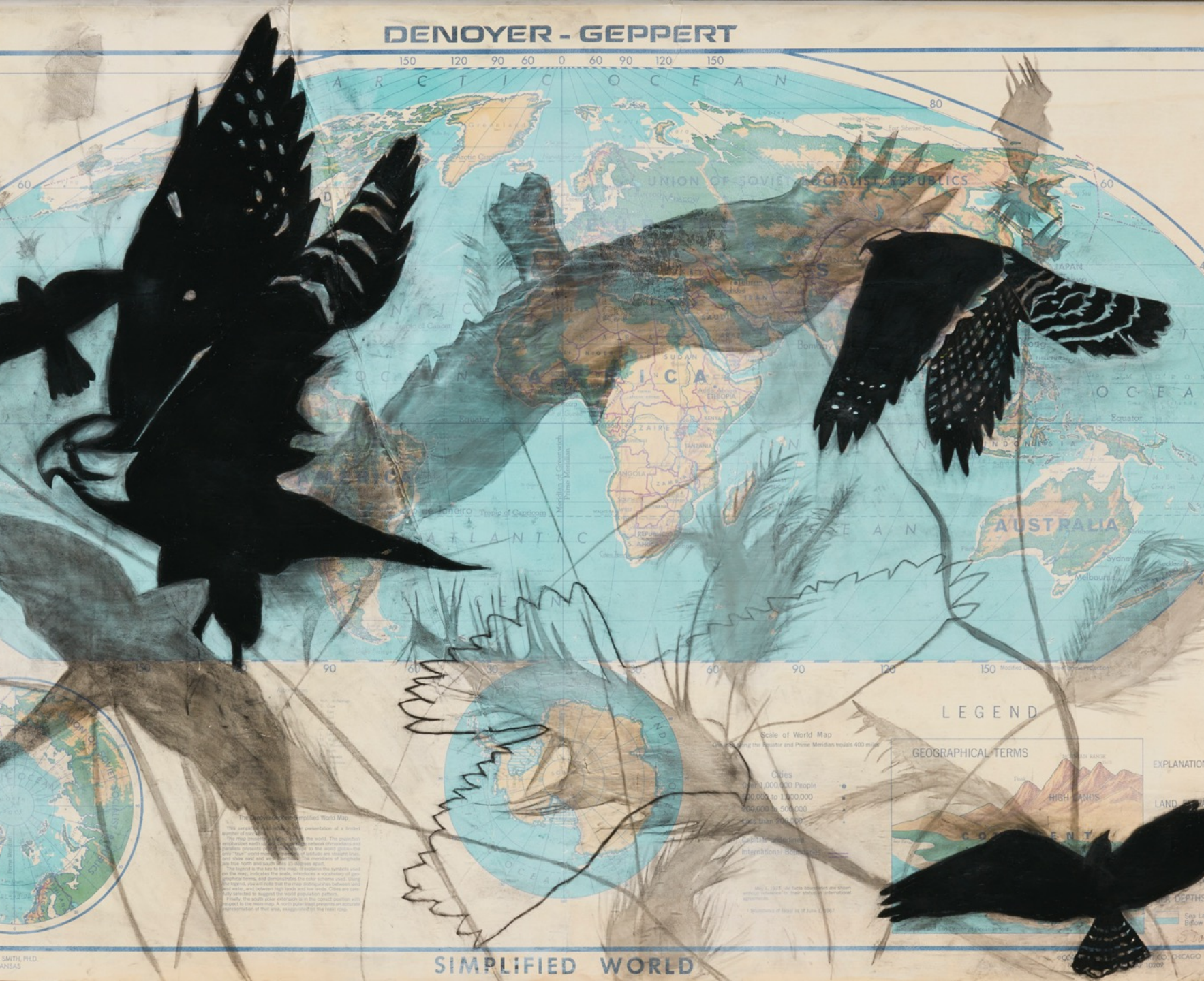
*BIOTA*

2019

Projection, copolyester, fiber optics,  
galvanized metal, microalgae

What does this work make you think of?





DENOYER - GEPPERT

Suzi Davidoff

*Simplified World/  
Aplomado Falcon and Grasses*  
2017  
Charcoal, gesso, and map

SIMPLIFIED WORLD

LEGEND

Scale of World Map  
One inch along the Equator and Prime Meridian equals 400 miles

GEOGRAPHICAL TERMS	EXPLANATION
Cities Over 1,000,000 People	•
500,000 to 1,000,000	•
200,000 to 500,000	•
Less than 200,000	•
International Boundaries	—
Highlands	■
Lowlands	■
Coastal Plains	■
Interior Plains	■
Mountains	■
Plateaus	■
Deserts	■
Swamps	■
Marshes	■
Wetlands	■
Water Bodies	■

The *Simplified World Map*  
The *Simplified World Map* is a historical  
reproduction of a world map published  
in 1907. The map is a historical  
reproduction of a world map published  
in 1907. The map is a historical  
reproduction of a world map published  
in 1907.



Catalina Delgado-Trunk

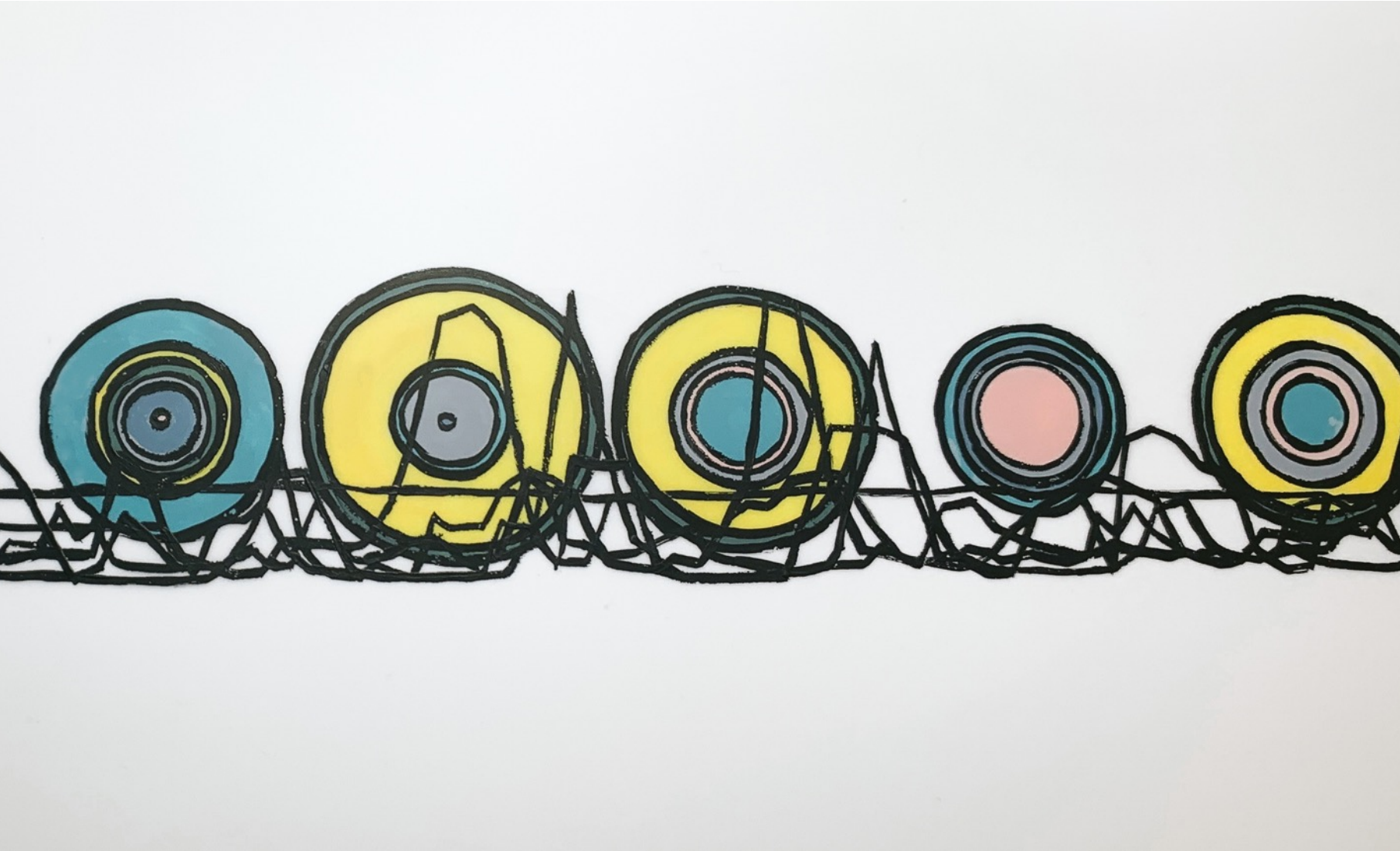
*Fauna Mesoamericana*

2017

Cutout on archival Japanese Leather grain paper with collage

**Create a story about  
an endangered animal  
and play it.**

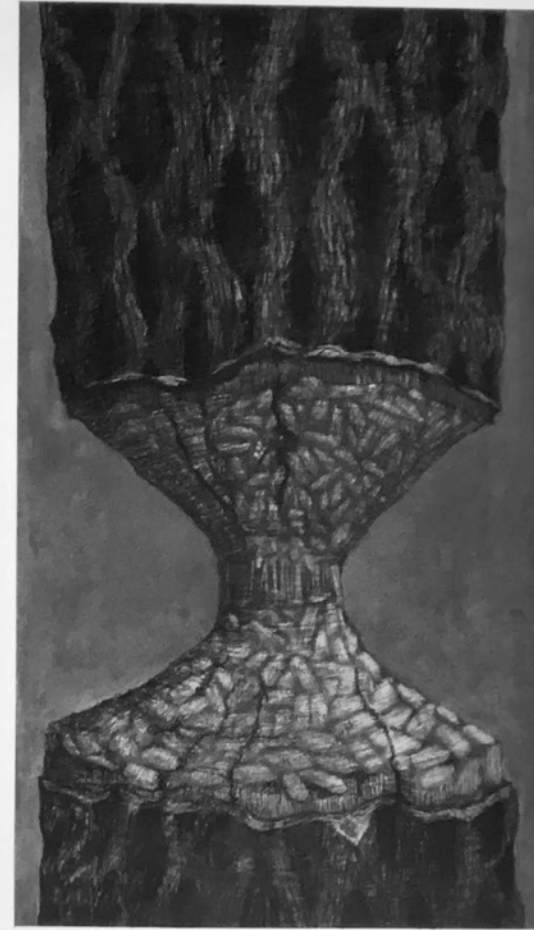
## Can you make a song about the river? What would it say?



De Marco, McLaughlin, Zeglin

*There Must Be Other Names for  
the River, Score For Six Singers  
2019*

Acrylic, mylar, paper, river  
water, wood



Nina Elder

*Interrupted Ecosystem:  
Beavers and Rivers*  
2019

Charcoal, graphite, ash, and dirt  
on paper

**How does this  
image make you  
feel?**

Jaque Fragua

*WOLF XING*

2019

Oil enamel and vinyl on aluminum



Which animals would you like to see on a road sign?

Jessica Gross

*The Creation*

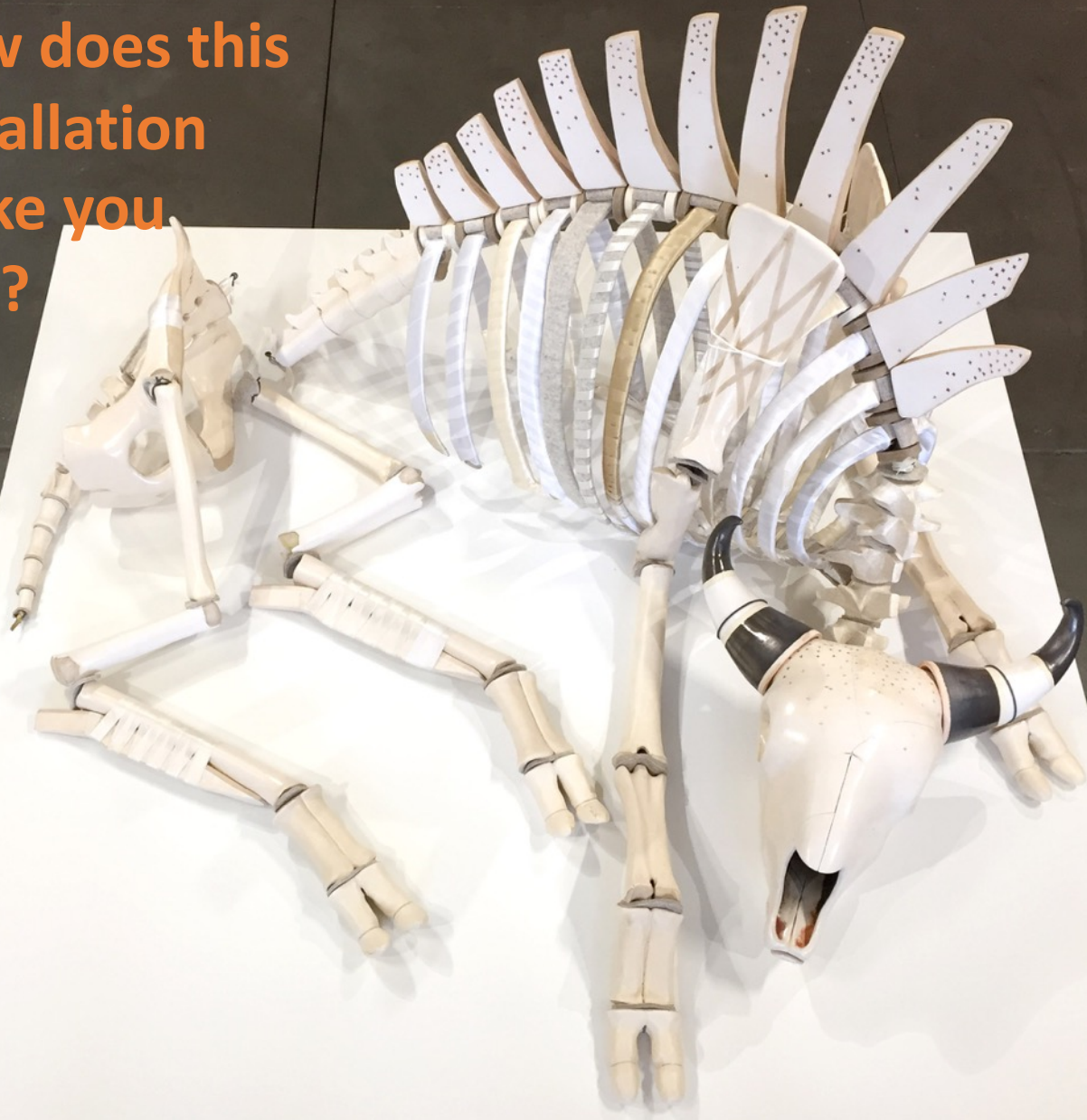
2017

Intaglio and serigraphy on paper



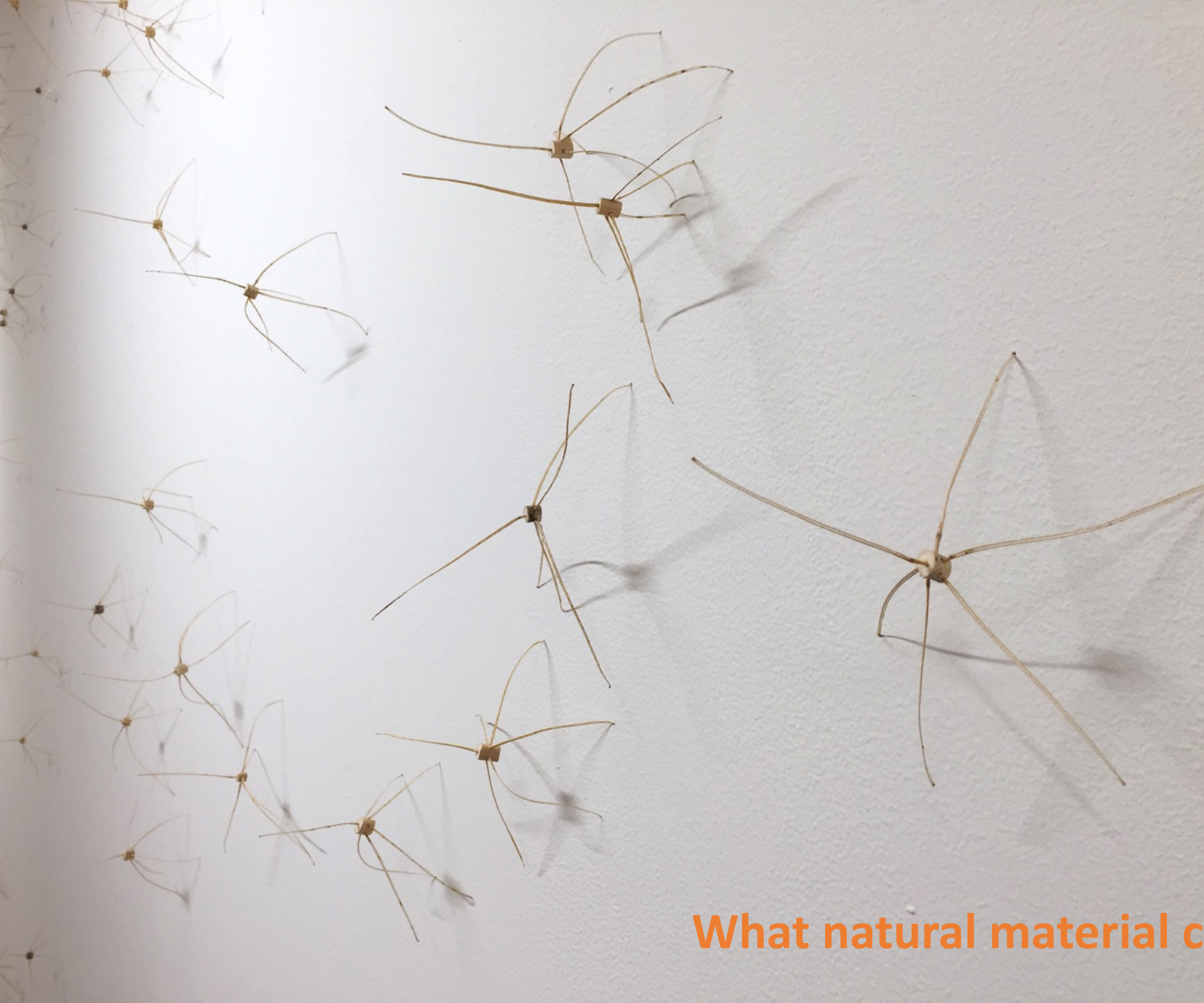
**Which other animals live with humans?**

How does this  
installation  
make you  
feel?



*Cannupa Haska Luger*  
*(Be)Longing*  
2019

Mixed media, life-size buffalo skeleton, sculptural installation,  
ceramic, steel, ribbon, fiber, video



c marquez

521

2019

Installation and seedpods and stems of  
*Sisymbrium altissimum*

**What natural material can you use to make art?**



Ruben Olguin

*Evaporation*

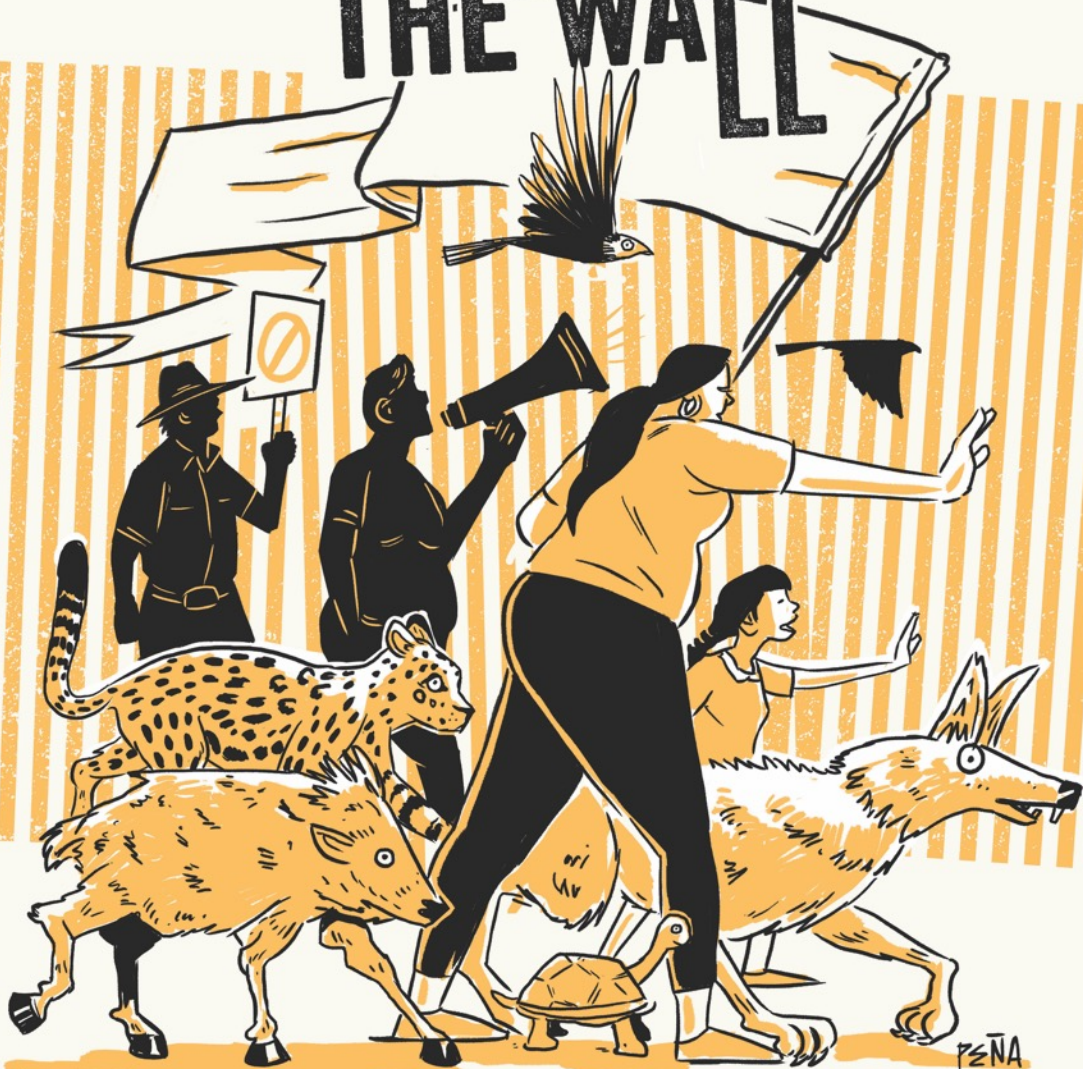
2019

Hand-foraged clay and soil on wall



**How many  
endangered  
species can you  
count and  
recognize?**

# ALL AGAINST THE WALL



Zeke Peña

*All Against the Wall*

2018

Digital illustration, created for Southwest Environmental Center (Las Cruces, New Mexico) to call attention to the harm that the border wall cause wildlife and our communities.

**Make a sign for a protest with animals.  
What is it about?**



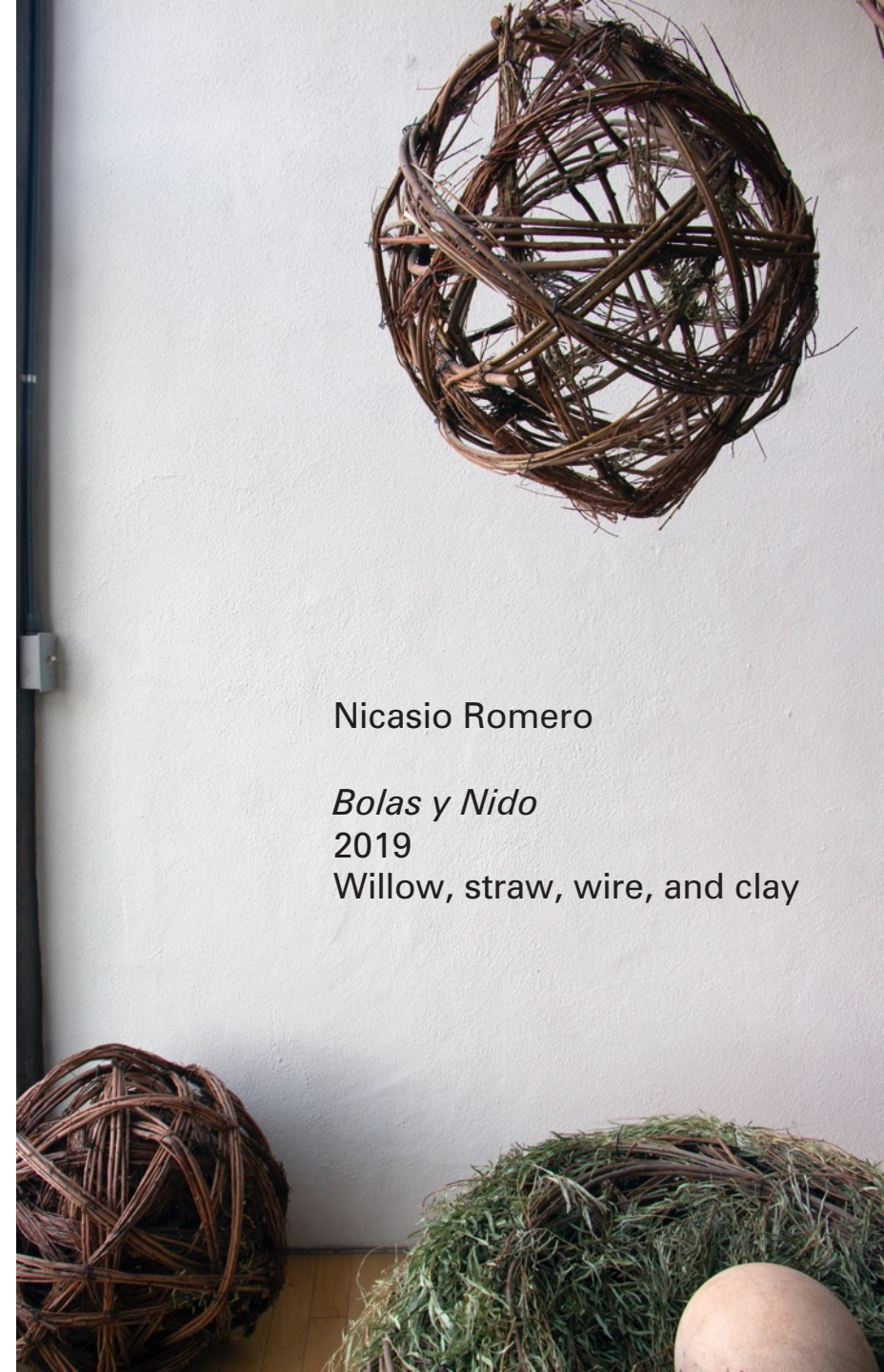
Daisy Quezada

*brotante*

2019

Porcelain ceramic seeds

How does this installation make you feel?



Nicasio Romero

*Bolas y Nido*

2019

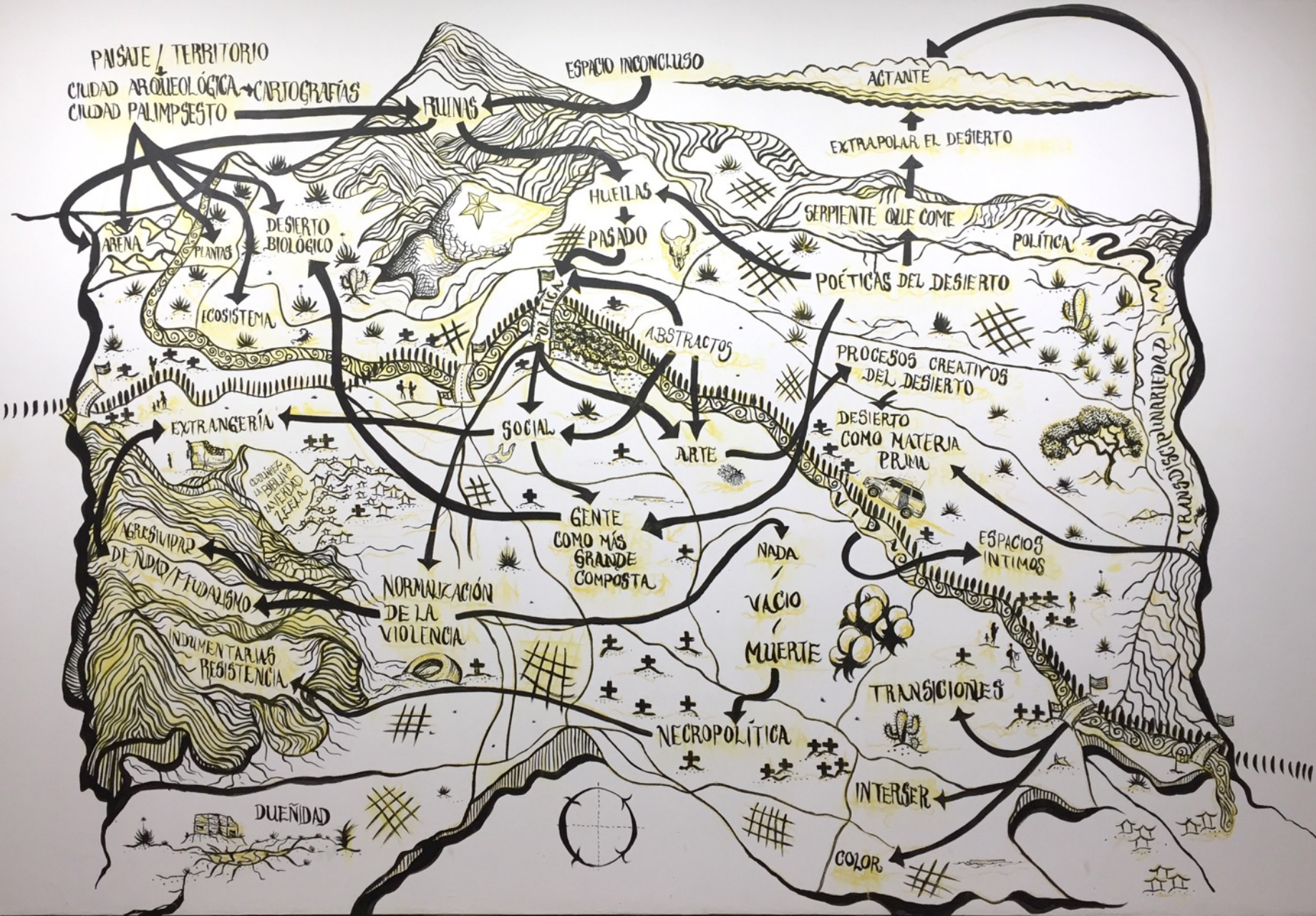
Willow, straw, wire, and clay

Marcia I. Santos

*Affective Cartography*

2019

Ink on wall



Can you make a map of your neighborhood full of stories?

Janette Terrazas

*Especies vegetales en peligro en el Desierto  
Chihuahuense*

2019

Textiles electrónicos y piñón sobre telas mixtas



Mary Tsiongas and Jennifer White-Owen

*Silvery Minnows, the recent*

2019

Etched Cast Acrylic

