



SPECIES IN PERIL

Along the Rio Grande

Exhibition & Education FALL 2019 • 516arts.org

516 Contemporary
ARTS MUSEUM



Michael Berman

INTRODUCTION

Species in Peril: Along the Rio Grande began as a discussion about how to approach organizing an art exhibition addressing species that are in crisis. We wanted to focus our efforts specifically on species rather than delve into the larger causes and impacts of climate change. Initially, the project was conceived as way to explore species loss on a national and global scale but we realized that our efforts would have more impact if we engaged with local artists, focused on our own geographic area, and made the process collaborative and interdisciplinary. Rather than select solely existing work, we invited a group of artists who live in the Rio Grande region to participate in a series of discussions that brought together curators, artists, scientists, community groups, nonprofits, and professors. Despite the overwhelming scientific information that is available, many people simply are not aware of what is happening in our own backyard. The bird die-off in the Pecos, the loss of wildflowers in Colorado, and the threats to species due to barriers being built on the US-Mexico border are just a few examples.

Together we grappled not only with the scientific studies but also the environmental, and emotional toll that the rapid decrease of species and biodiversity has taken on us and the planet. Our approach is unique in that we are supporting local artists and asking them to really engage with species loss in a way that will turn the studies into stories, which invite viewers to become more aware of what is happening to the living world around us. Our goal was to facilitate the process in such a way that the artwork produced would not simply be a documentation of the species themselves, but would serve as larger reflections on the crisis as it is embedded in art, culture, history, politics, and of course science. We hope that by raising awareness, the alliances and networks that were formed through this project will be vehicles through which to build the kind of acknowledgment and understanding that can lead to action.

— Josie Lopez, Co-Curator
Curator of Art, Albuquerque Museum

EDUCATION & PROGRAMMING

GOALS:

- AWARENESS
- UNDERSTANDING
- ACKNOWLEDGMENT
- ACTION

516 ARTS and partners present "Species in Peril Along the Rio Grande" on view from September 28th to December 28th, 2019.

Each of the artists in the exhibition offers a different entry point in the story of the Rio Grande and the human impact on the ecology of the region and the planet. Albuquerque educators and their students are invited to examine some of the issues and understand what is important and how to intervene.

Class involvement could range from a simple exhibition tour and response assignment to a more complex class project or inter-action with the exhibition and related programs.





Michael Berman

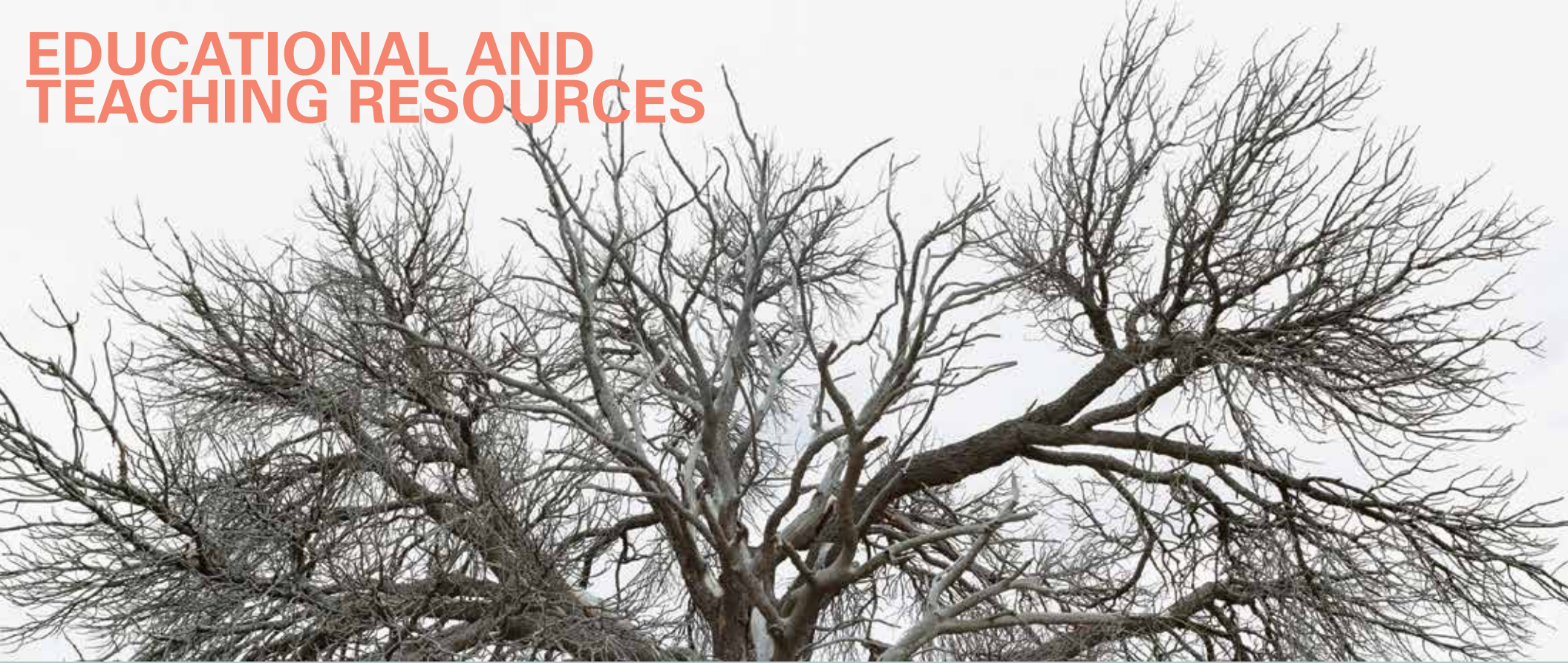
*"This is important to me.
I want to tell you about this.
Will you listen?
Will you help me remember?"*

Nina Elder - Artist & Educator

We are offering interdisciplinary and active learning tools:

- 1 EDUCATIONAL AND TEACHING RESOURCES**
- 2 EXHIBITION TOURS**
- 3 STUDENT ENGAGEMENT
(PROGRAMMING, EVENTS & ACTIVITIES)**

EDUCATIONAL AND TEACHING RESOURCES



1 TEACHING TOOLS AND RESOURCES:

- Curatorial statement
- Discussion questions and project ideas for the classroom
- Prep questions before exhibition tours
- Glossary of terms
- Program guide/calendar publication to regional collaboration
- Exhibition catalog with essays by Subhankar Banerjee, Josie Lopez and Laura Paskus
- Artworks image list and study packets for teachers
- Resources (books, movies, pod-casts, etc...)
- Survey

2_STUDENT ENGAGEMENT (PROGRAMMING, EVENTS & ACTIVITIES)

— Middle and High Schools: Bosque Study Trips

The Bosque Ecosystem Monitoring Program (BEMP) is leading a series of educational study trips into the Bosque where students will look for and identify local plant and animal species, learn about how the Rio Grande's riparian forest is changing, and what these changes mean for the imperiled species that call it home. Participants learn survey techniques for listed species such as the Threatened Yellow-billed Cuckoo, how to assess habitat suitability, and what they can do to help with conservation efforts. Ecology and conservation inform place-based explorations of art and expression while in the field, giving participants a unique opportunity to creatively merge art and science while immersed in Albuquerque's natural spaces.

Study Trip place-based art includes a performative exercise to learn about bird calls and avian surveying, as well as symbolic mapping project to help assess suitable habitat for the Yellow-billed Cuckoo.

The activity is completed with a visit at the 516 ARTS exhibition.

Location: Open Space Bosque, Albuquerque, NM
alex.levine@bosqueschool.org • bemp.org

— 5th grade and above: Agnes Chavez STEAM Curriculum

Teachers would explore the artist's webpage, where Bio STEAM activities are offered for the classroom, designed around the installation in the show. The activities could be followed by an artist talk, during which the artist would share her process and students ask questions.

— K, Elementary and Middle School

Educational activities for the classroom and additional resources will be available at 516arts.org for pre/post exhibition visits.

Classroom activities include:

SHADOW PUPPETS: Stories of Animals

HERBARIUM: Art & Leaves

Workshop and hands-on activities for younger students will be offered by few of the artists in the show:

Ruben Olgun - Endangered Species Mud Stencil Workshop

1-2 hours / Grades 3rd - 6th

The *Endangered Species Mud Stencil Workshop* is a STEAM workshop where students combine lessons in ecological responsibility, endangered species identification, graphic design, and sustainable Art practice.

Students will choose a species from the endangered species list, create a silhouette stencil cut out and use clay "paint" to create a mural of endangered species dependant on the Rio Grande river.

Kaitlin Bryson - The Cottonwood

Details to be defined with the educators.

Time and dates for all workshops to be arranged with educators.

Email viola@516arts.org for more information.

4_PUBLIC REGIONAL PROGRAMS

See calendar in the following pages for the major events in the public program.

Full program available at:

www.516arts.org/species_in_peril_program_guide

516 ARTS offers free tickets for students for Elizabeth Kolbert & Laura Paskus, at KiMo Theatre, Thursday, October 3, 7pm.

In order to allow everyone interested to be able to participate, please reserve the number of tickets for your class based on who is really able to attend. For info and reservations: viola@516arts.org

3_EXHIBITION TOURS

Engaging with contemporary art is a great way to encourage students to connect with the world around them and helps to develop creative and critical thinking skills. 516 ARTS welcomes school and community groups of all ages.

Our knowledgeable staff works with students and educators to incorporate an interactive and interdisciplinary experience that can enhance classroom instruction, individual and group projects and further inquiry.

Exhibition tours are available for groups and classes of any age
To request a tour, go to 516arts.org/education or email viola@516arts.org.



NEW MEXICO

Albuquerque:

Saturday, September 21, 2:30pm Public Forum
Encuentro de Semillas // Gathering of Seeds
 at Albuquerque Museum

OPENING WEEK EVENTS:

Saturday, September 28 Opening Reception
Species in Peril Along the Rio Grande: Contemporary Artists Respond, 5-6pm Member Preview / 6-8pm Public Reception,
 at 516 ARTS

Sunday, September 29, 2pm Opening Address
 Kierán Suckling, Cannupa Hanksa Luger & Curators
 at Albuquerque Museum

Thursday, October 3, 7pm Conversation & Booksigning
 Elizabeth Kolbert & Laura Paskus, at KiMo Theatre,
 with reception & booksigning at 516 ARTS

Monday, October 14, 5-7pm Indigenous Peoples Day event
Honoring Traditional Ecological Knowledge of the Rio Grande,
 at Valle de Oro National Wildlife Refuge

Saturday, October 19, 2-4pm Outdoor Event
 Field Murals & Poetry, at Valle de Oro National Wildlife Refuge

Friday, November 15, 6pm Public Forum
Species in Peril on the Borderlands
 at 516 ARTS

Saturday, November 16, 7:30pm Performance
There Must Be Other Names for the River
 at the National Hispanic Cultural Center

Wednesday, November 20, 7pm Panel Discussion
Restoration & Resilience: Reclaiming Cultural Ecosystems, at
 Indian Pueblo Cultural Center

Thursday, December 5, 6pm PUBLIC FORUM & Booksigning
 Bathsheba Demuth & Joe Cook: *Global Perspectives*
 at 516 ARTS

Thursday, December 12, 5-7pm Talk
 Bird Conservation in New Mexico, at 516 ARTS

Jemez Pueblo:

Saturday, October 12, 10am-1pm Walk
 Indigenous Knowledge Walk, at Jemez Pueblo

Las Cruces:

Wednesday, November 20, 7pm Lecture
 Subhankar Banerjee: *Multispecies Justice in the Age of Biological Annihilation & Climate Breakdown* at Rio Grande Theater

Roswell:

Friday, November 8, 5:30pm Opening Reception
A Line in the Sand: Wildlife of the Borderlands, at Roswell Museum & Art Center

Taos:

Sunday, September 22, 5-8pm Public Art Launch
Pollinator Concentrator: Focusing the Unseen, at Rio Fernando Park

MEXICO

Friday, November 8, 2pm Mural Launch
Both Sides of the River: Endangered Species in the Borderland, at Universidad Autónoma de Ciudad Juárez

Saturday, November 9, 7pm Opening Reception
Desierto.Arte.Archivo, Centro Cultural de las Fronteras, UACJ, Ciudad Juárez

TEXAS

September 27 & November 2 Exhibition & Events
Alebrijes by Colectivo Ultima Hora, at El Paso Museum of Art

Friday, September 26, 5-7:30pm Mural Launch
Both Sides of the River: Endangered Species in the Borderlands, at the Rubin Center for the Visual Arts, El Paso

Through October 27 Exhibition
Candelilla, Coatlucue, and the Breathing Machine
 at Ballroom Marfa

Friday, November 15, 6-9pm Opening Reception
Solange Pessoa, at Ballroom Marfa

COLORADO

Tuesday, December 3, 5:30pm Talk
 Regan Rosburg: *Art and Grief: the Rio Grande Watershed*
 at RedLine Contemporary Art Center, Denver

All students and instructors are invited to the public program events.

Detailed program at www.516arts.org/species_in_peril_program_guide

EXHIBITION DATES:

September 28 – December 28, 2019

ARTISTS

Michael P. Berman

Kaitlin Bryson & Hollis Moore

laura c carlson

Agnes Chavez

Suzi Davidoff

Catalina Delgado Trunk

Marisa Demarco, Dylan McLaughlin & Jessica Zeglin

Nina Elder

Jaque Fragua

Jessica Gross

Cannupa Hanska Luger

c marquez

Ruben Olguin

Zeke Peña

Daisy Quezada

Nicasio Romero

Marcia I. Santos

Janette Terrazas

Mary Tsiongas & Jennifer Owen-White

KAITLYN BRYSON & HOLLIS MOORE

"The decline of cottonwoods along the Rio Grande is changing the entire ecosystem, resulting in habitat loss and species migration. Our work asks, how is loss felt? What will be left in this wake? We explore these questions through hand-made cottonwood paper embedded with native seeds."

KEY WORDS: Cottonwood - Flooding - Riparian areas



MICHAEL P. BERMAN

"I drove the entire river. Top to bottom. Ain't no river left in the river. The peril of these species is all about lost habitat. We have remade the river, if we cannot get at it, farm it, ranch it, we take the water and set it channels, dams and pipes."

KEY WORDS: Water and Land Management - Geography - Landscape Photography



LAURA C CARLSON

"There are around 300 species of freshwater mussels in the United States alone, more than any other country in the world, 217 of them are already listed as imperiled or extinct! These ecosystem engineers filter 10-15 gallons of water a day and live between 7-100 years (Texas Hornshell lives over 20 years). In a bed of 1000 THS, that's 109,500,000 gallons of water filtered.

If a mussel can't survive in your river, you can't live off that river."

KEY WORDS: Mussels - Water Quality - Endangered Species



AGNES CHAVEZ

"There are more microbial species on Earth than stars in the galaxy'. Thanks to DNA sequencing we are now able to 'see' them and understand how they too are in peril."

KEY WORDS: Art & Science - Computer Sciences - DNA - Microbes



SUZI DAVIDOFF

"Suzi Davidoff is an artist based in the Chihuahuan desert of West Texas, creating drawings, prints, animations and collaborative installations that explore themes of structure, sustainability, and perception of the natural world. In addition to charcoal, graphite and ink, Davidoff uses found organic materials. Moss, clay, cochineal, earth, and lichen collected on her walks are rubbed into the surfaces of the work, creating a physical connection between personal experience and finished work."

KEY WORDS: Maps - Field notes - Endangered species



MARIA DEMARCO, DYLAN MCLAUGHLIN & JESSICA ZEIGLIN

"The Rio Grande was born approximately 5 million years ago, growing to its current length at 1 million years ago. Since then, it has supplied life-giving water to many and has been manipulated to both enable and curtail life and movement. We were born approximately 4.999 million years after the river, and drink and bathe in its waters daily. The Rio Grande is itself a living being who has experiences over time including birth, growth, and possibly death, as climate disruption and water overuse force startling changes and threaten the existence of many beings that depend on this lifeline in the desert."

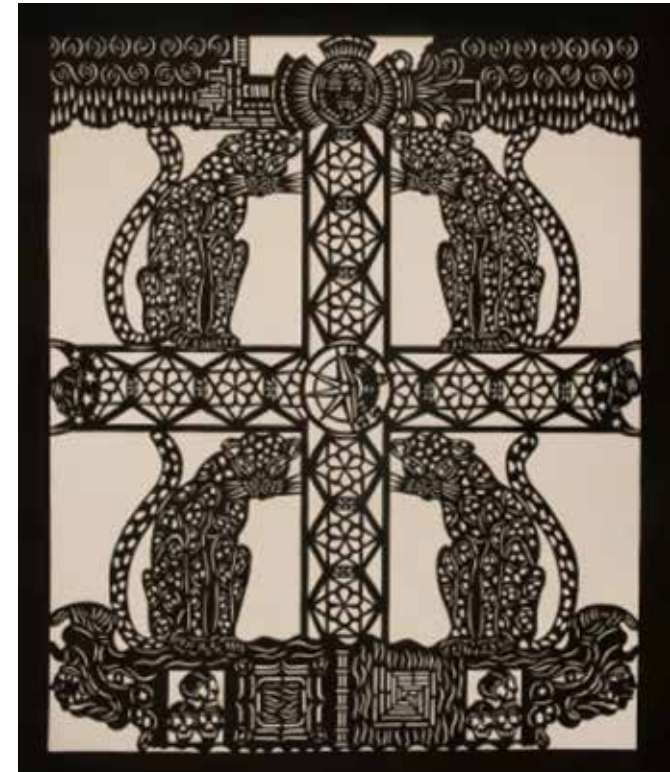
KEY WORDS: Data sonification - Water Management - Music & Performance

CATALINA DELGADO-TRUNK

"The point of departure for my designs are the mythical, spiritual, and religious images and symbols, as well as the social archetypes and aesthetics of my homeland, Mexico, as I blend pre-Colombian with the European, contemporary, ethnic, and popular folk manifestations in my art work. Through my art, I return to my ancestor's belief that humans are point of contact between the material and spiritual, between life and death, between light and darkness, as well as between the divine, the sublime, and the profane."

KEY WORDS:

Mexican and Pre-Columbian History
– Animals and Mythologies –
Endangered Species



JAQUE FRAGUA

"Our natural environment is at odds with modernization, industrialization, globalism, and colonization. Our lifestyles do not respect the life of the land, water, or air. Our endangered relatives, the plants and animals that share this home with us, need our attention and care more than ever. These species are a reflection of the state of our species."

KEY WORDS:

Border Region – Mexican Grey Wolf, Jaguar, and Ocelot – Coexistence

JESSICA GROSS

"Humans and rats are both highly adaptable animals that invade and thrive together, driving out native species – someday we may be the only ones left."

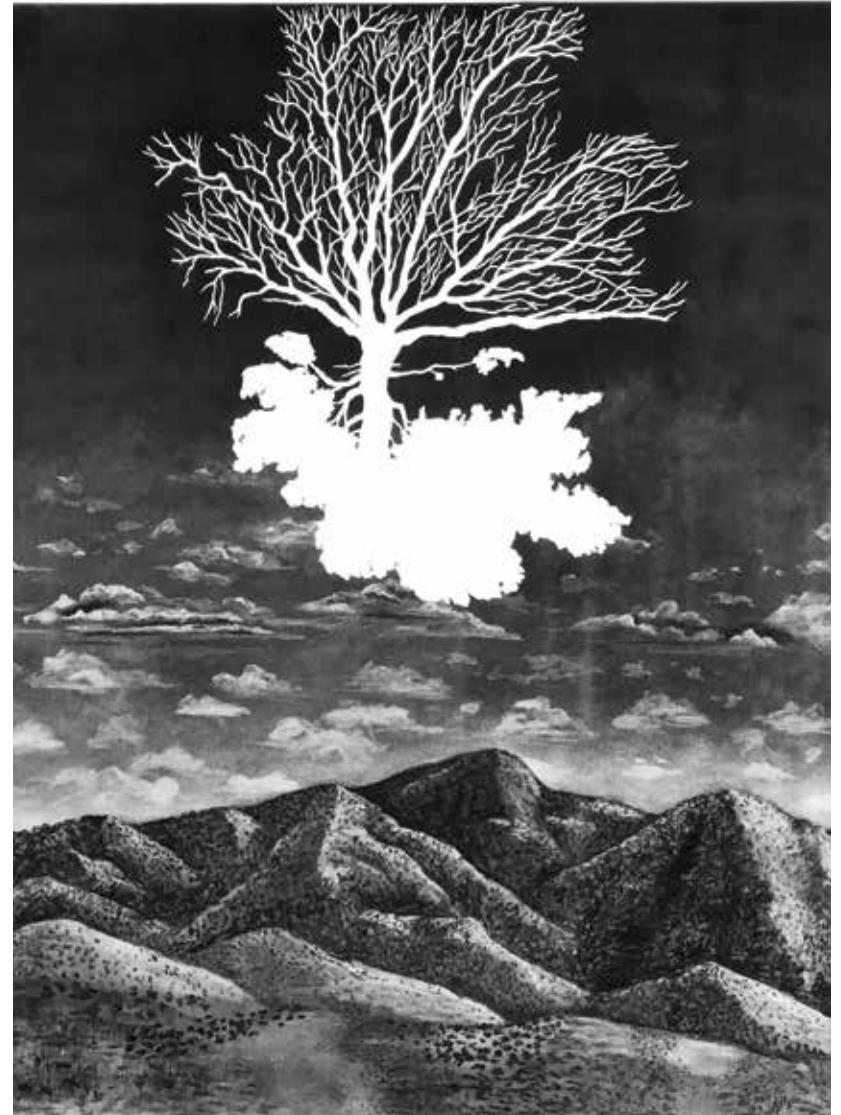
KEY WORDS: Rats – Colonization – Human interference



NINA ELDER

"As dominant human culture is expressed through extraction, consumption, and waste, the beaver almost went extinct. In the next 50 years, New Mexico's state tree, the two-needle piñon, will lose 80% of its population due to anthropogenic disruption. Facing unprecedented change and loss, what are we going to remember? What will haunt us?"

KEY WORDS: Solastalgia - Ecosystems Collapse - Erasing





C MARQUEZ

"This project speaks to painful truths about imperiled species along the Rio Grande, while offering space for reflection through these light, fragile, ephemeral beings. Perhaps we may slow down, take a closer look, and fall in love with small parts of nature that are right around us on the land where we live, inspiring stewardship and preservation."

KEY WORDS: New Mexico meadow jumping mouse – Tall-tumble-mustard plant – Imperiled and ephemeral

CANNUPA HANSKA LUGER

"My project is a figurative ceramic and steel sculpture in the form of a full-sized buffalo skeleton that is both sculpture and subject in a series of videos. It explores the cascading effects of a decimated species on our precious and interconnected environment, and expresses how losing one species a hundred years ago has lasting effects in the 21st century."

KEY WORDS: Buffalo – Colonization – Extinction



RUBEN OLGUIN

"Using mud and earth pigments collected along the Rio Grande Valley the image shows the expanse of Rio Grande River and all of its tributaries. Each symbol depicted is by species including, crustaceans, mollusks, fishes, amphibians, reptiles, birds, mammals and plants for a total quantity of all species endangered or threatened. By using mud the work evokes the dry habitat the wet river cuts through and the sensitivity of the Rio Grande's bio-regions inhabitants to water usage, climate change and pollution."

KEY WORDS: Map - Dry Landscapes - Data Visualization

ZEKE PEÑA

"The River is an illustrated time line of the river in one image. The river has been essential to survival and the foundation of cultures for thousands of years but recently we've seen many detrimental changes the river has gone through due to colonization, poor management and the international border infrastructure."

KEY WORDS: Border infrastructures - Water management - Politics of nature



DAISY QUEZADA

"The work situated within communities, near and around the Rio Grande, asks to be explored and understood beyond the immediate. Garments, like voice, hold an impression on how life has impacted life. When flung high they ask for a parlay with those around. The ceramic work created becomes a marker. Narrative is reinforced by the audio, a language that moves beyond the individual self into a space. Digital mapping locates and archives sites with any information communicated on the space - ceramic and audio."

KEY WORDS:

Communities - Individual/collective - Landmarks



NICASIO ROMERO

"I focused on the frail nature of birds and how their existence is threatened. This nido also shows the strength and resilience of nature, in spite of all the efforts, both intentional and unintentional, to disrupt and destroy."

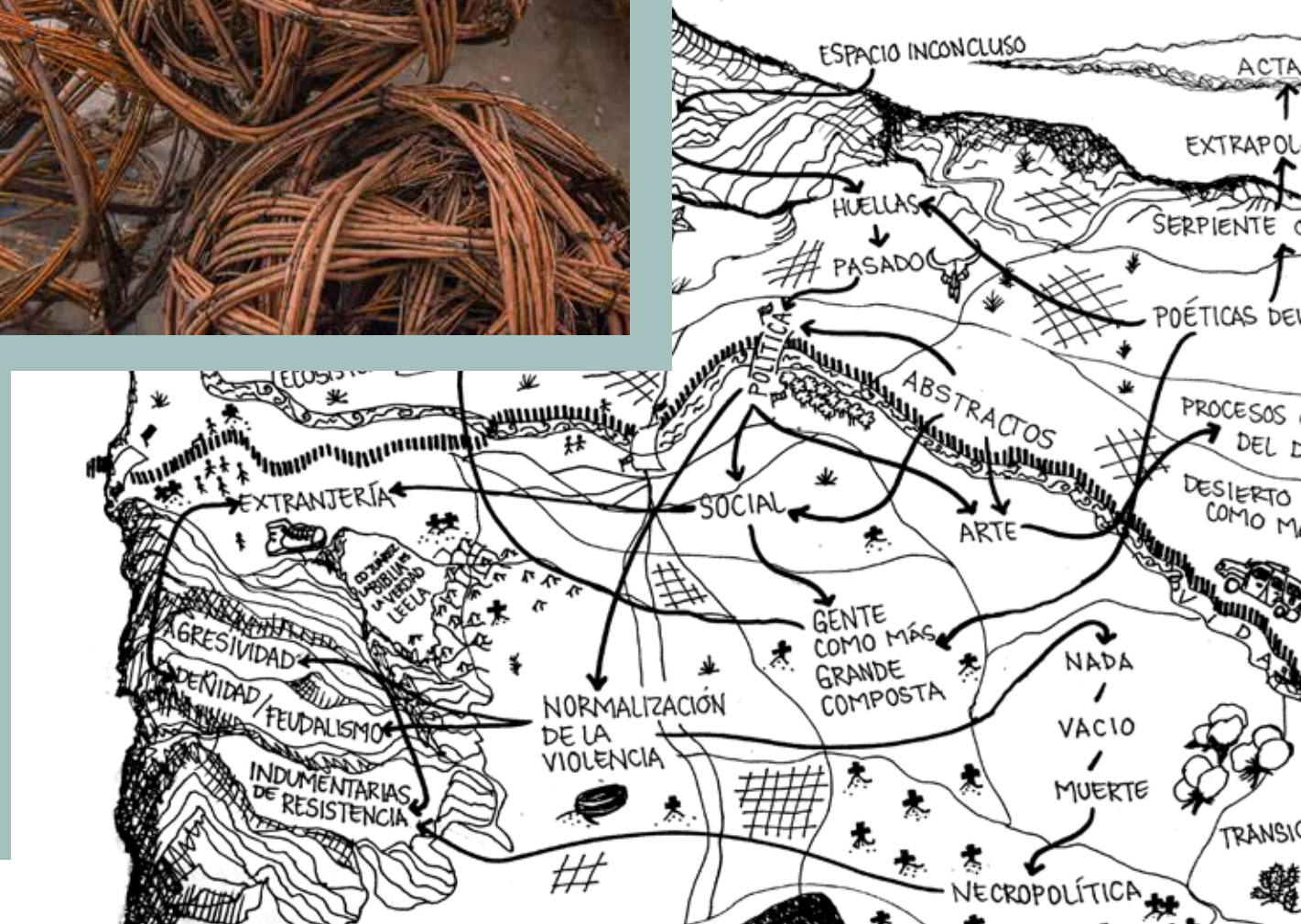
KEY WORDS: Birds - Migration - Resilience

MARCIA I. SANTOS

"Affective Cartography" is an illustrated map of the borderlands surrounding Ciudad Juárez and El Paso that is based on a collaborative process that arose from the class seminar Desert.Art.Archive where artists defined a concept that was reflected in their particular artistic practice.

The map-like diagram was devised with respect to the collective imagination that is constructed across the landscape—the historical, social and aesthetic—in analogy with the topography and surrounding plains, hills, flora, fauna and the effects of resource management, environmental policies and the limits of both countries.

KEY WORDS: Maps - Border - Image / Text





MARY TSIONGAS AND JENNIFER OWEN-WHITE

“The work explores our changing relationship to the natural world. We use ‘natural world’ to refer to the naturally occurring landscape, and to it’s apotheosis in wilderness; and as a term of opposition to the increasingly harmful suburban/urban/engineered/built environments in which we find ourselves.”

KEY WORDS: Natural/Urban - Rio Grande Silvery Minnow

JANETTE TERRAZAS

“A series of maps allows us to know which plant and animal species are in danger of extinction in various areas of the US-Mexico border, through electronic textiles we can observe the ecosystems with the highest concentration of species as well as obtain specific information about their distribution and conservation status.”

KEY WORDS: Endangered Species - Borderlands - Technology

Species in Peril in the Rio Grande Watershed

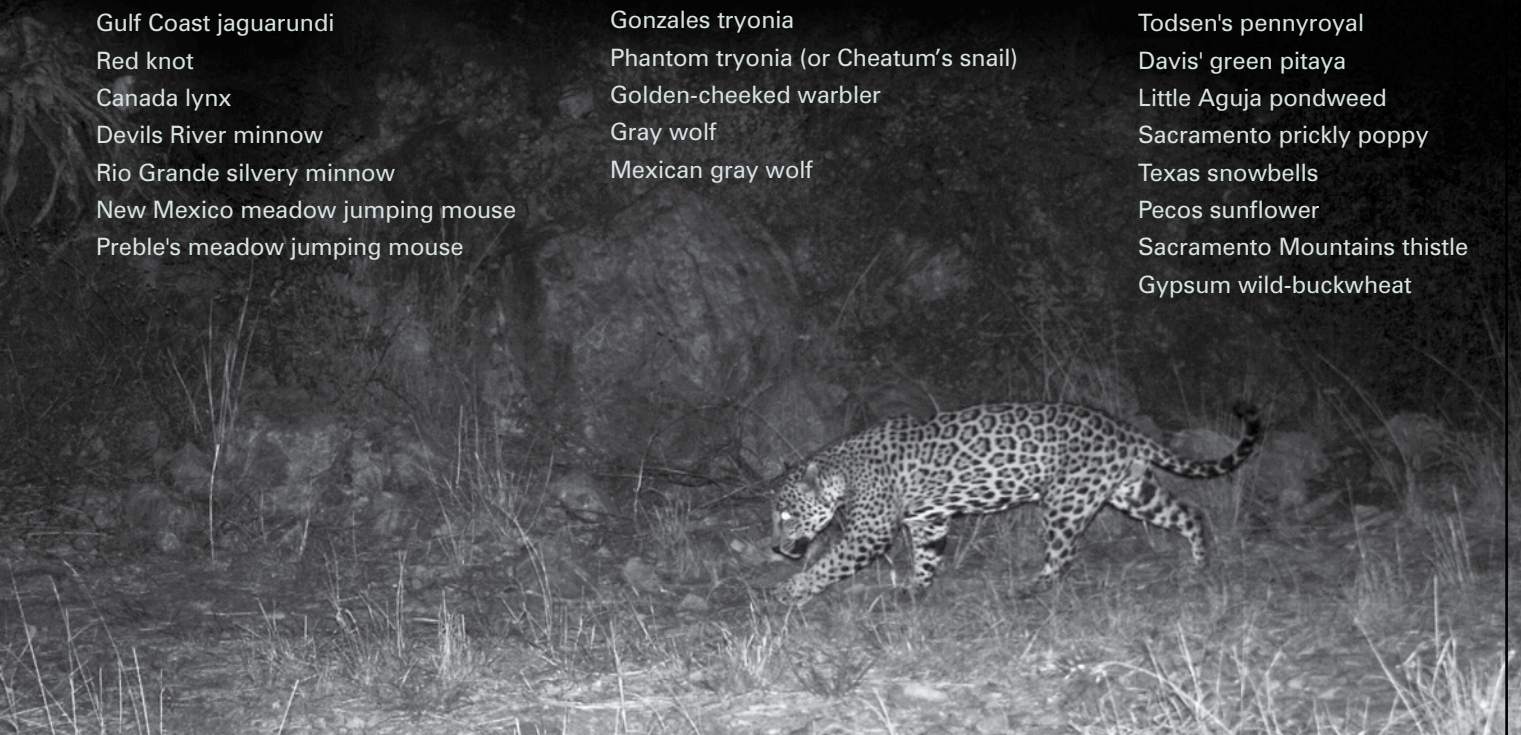
ANIMALS:

Diminutive amphipod
Noel's amphipod
Pecos amphipod
Mexican long-nosed bat
Mexican blindcat
Uncompahgre fritillary butterfly
Western yellow-billed cuckoo
Bald eagle (delisted)
Northern aplomado falcon
Peregrine falcon (delisted)
Black-footed ferret
Southwestern willow flycatcher
Big Bend gambusia
Pecos gambusia
Texas hornshell
Socorro isopod (or Socorro sowbug)
Jaguar
Gulf Coast jaguarundi
Red knot
Canada lynx
Devils River minnow
Rio Grande silvery minnow
New Mexico meadow jumping mouse
Preble's meadow jumping mouse

Ocelot
Mexican spotted owl
Piping plover
Comanche Springs pupfish
Leon Springs pupfish
Jemez Mountains salamander
Pecos bluntnose shiner
Pecos assiminea snail
Alamosa springsnail
Chupadera springsnail
Koster's springsnail
Phantom springsnail
Roswell springsnail
Socorro springsnail
Least tern
Greenback cutthroat trout
Diamond tryonia
Gonzales tryonia
Phantom tryonia (or Cheatum's snail)
Golden-cheeked warbler
Gray wolf
Mexican gray wolf

PLANTS:

Texas ayenia
Zapata bladderpod
Kuenzler hedgehog cactus
Lee pincushion cactus
Lloyd's mariposa cactus
Bunched cory cactus
Nellie cory cactus
Sneed pincushion cactus
Star cactus
Tobusch fishhook cactus
Terlingua Creek cat's-eye
Ashy dogweed
Guadalupe fescue
Zuni fleabane
Holy Ghost ipomopsis
Walker's manioc
Hinckley oak
Todsens pennyroyal
Davis' green pitaya
Little Aguja pondweed
Sacramento prickly poppy
Texas snowbells
Pecos sunflower
Sacramento Mountains thistle
Gypsum wild-buckwheat



Partners & Venues

NATIONAL

Center for Biological Diversity
Defenders of Wildlife

NEW MEXICO

Albuquerque

516 ARTS
Albuquerque Museum
Audubon New Mexico
Bernalillo County Public Art Program
Bosque Ecosystem Monitoring Program
City of Albuquerque Open Space
Creative Media Institute
Harwood Art Center
KiMo Theatre
Lannan Foundation
National Hispanic Cultural Center
New Mexico BioPark Society
SeedBroadcast
Sierra Club of the Rio Grande
Southwest Conservation Corps - Ancestral Lands Program
University of New Mexico:
 Art & Ecology Program
 Maxwell Museum of Anthropology
 Museum of Southwestern Biology
 Office of the Provost & Academic Affairs

Valle de Oro National Wildlife Refuge & Friends of
WildEarth Guardians

CARLSBAD

Carlsbad Museum & Art Center
Juntos Art Association

Jemez Pueblo

Bear Paw Tours
Flower Hill Institute

Las Cruces

City of Las Cruces
Creative Media Institute
Cruces Creatives
Southwest Environmental Center
Senator Tom Udall's Office
Rio Grande Theater
University Art Museum at NMSU

Roswell

Roswell Museum & Art Center

Taos

BioSTEAM Lab
Taos Land Trust

TEXAS

Ballroom Marfa
El Paso Museum of Art
Rubin Center for the Visual Arts at UTEP

COLORADO

RedLine Contemporary Art Center, Denver

MEXICO

El Museo de Arte Ciudad Juárez
Visual Arts Program, Universidad Autónoma de Ciudad Juárez

For info, scheduling and other support, please contact:

Viola Arduini

Education and Outreach Coordinator

516 ARTS

viola@516arts.org